

PARA USO EN AVIACIÓN VIRTUAL ÚNICAMENTE

ARRIVAL

JEPPESEN

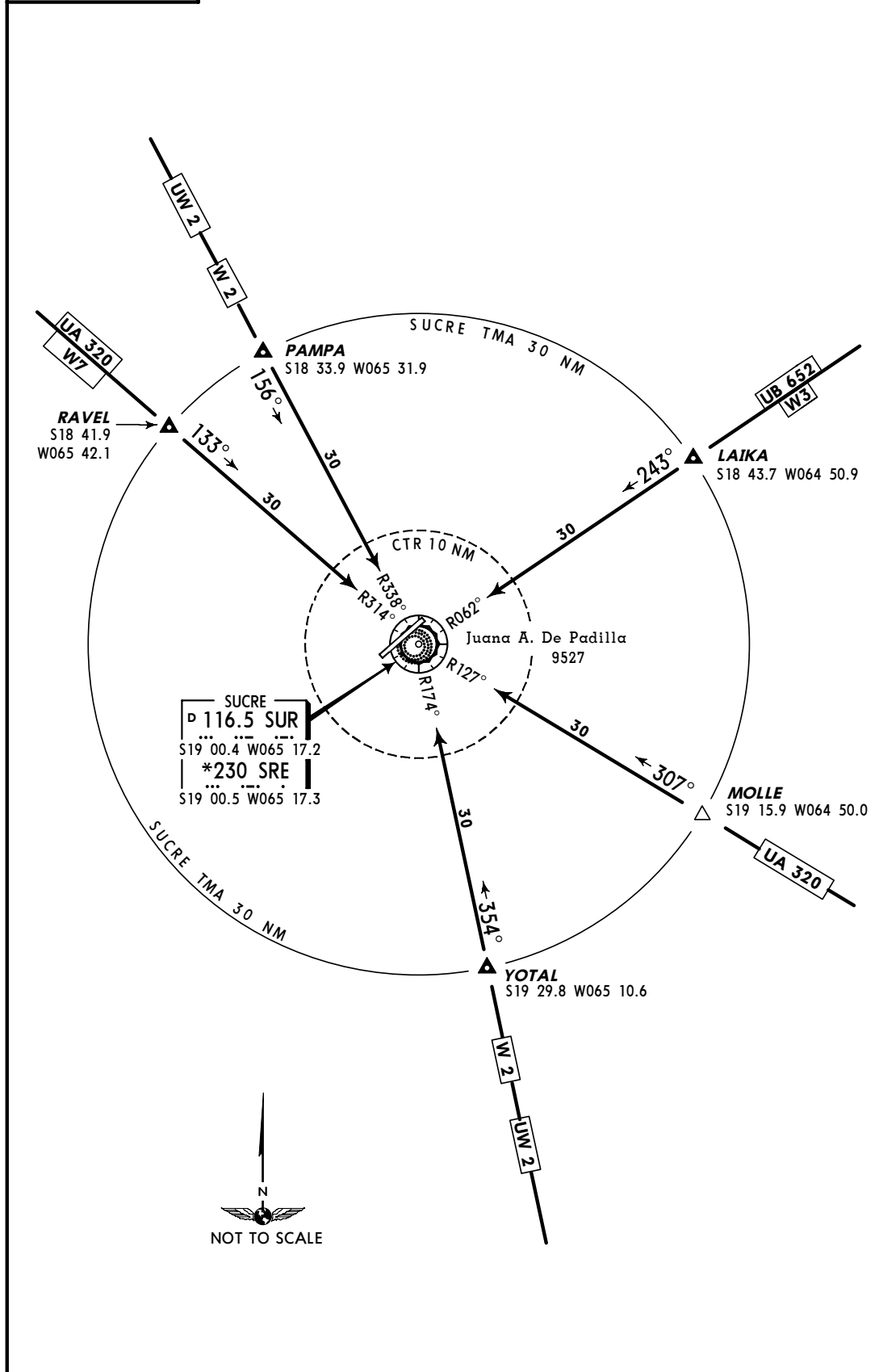
23 JUL 99

10-2

SUCRE, BOLIVIA
JUANA A. DE PADILLA

TRANS LEVEL: BY ATC
TRANS ALT: 18000'

ARRIVAL ROUTES TO SUCRE TMA



CHANGES: Procedure.

© JEPPESEN SANDERSON, INC., 1992, 1999. ALL RIGHTS RESERVED.

PARA USO EN AVIACIÓN VIRTUAL ÚNICAMENTE

JEPPESEN 23 JUL 99

10-3

SID

SUCRE, BOLIVIA
JUANA A. DE PADILLA

TRANS LEVEL: BY ATC
TRANS ALT: 18000'

MOLLE TWO, YOTAL TWO DEPARTURES

(RWY 05)

This SID requires a minimum climb gradient of:

MOLLE: 5.0% to 12300', thereafter 4.0%.

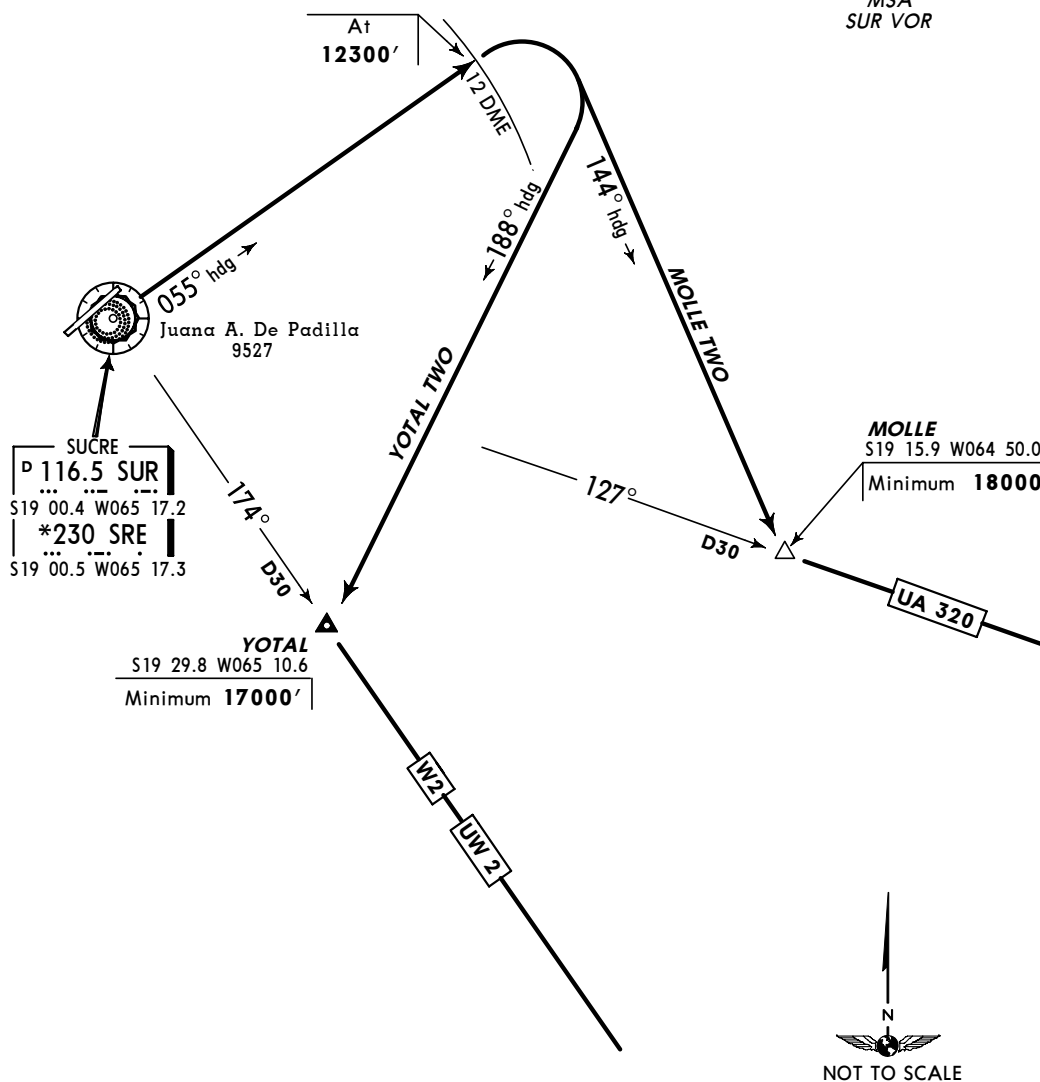
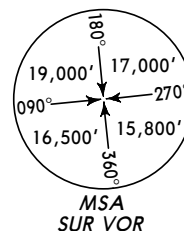
YOTAL: 5.0% to 12300'.

IAS-Kts	75	100	150	200	250	300
5.0% V/V(fpm)	380	506	760	1013	1266	1519
4.0% V/V(fpm)	304	405	608	810	1013	1215

DEPARTURE

MOLLE TWO: Climb on 055° heading. At 12300' and 12 DME turn RIGHT heading 144° to Molle Int, cross Molle Int minimum 18000'.

YOTAL TWO: Climb on 055° heading. At 12300' and 12 DME turn RIGHT heading 188° to Yotal Int, cross Yotal Int minimum 17000'.



PARA USO EN AVIACIÓN VIRTUAL ÚNICAMENTE

JEPPESEN 23 JUL 99

10-3A

SID

SUCRE, BOLIVIA
JUANA A. DE PADILLA

TRANS LEVEL: BY ATC
TRANS ALT: 18000'

SUCRE TWO DEPARTURE

(RWY 05)

This SID requires a minimum climb gradient of:
5.0% to 12300', 2.0% SUR VOR to Pampa Int
(W2/UW2), 2.0% SUR VOR to Ravel Int (W7/UA320),
4.0% from 12300' to Laika Int (W3/UB652).

IAS-Kts	75	100	150	200	250	300
2.0% V/V(fpm)	152	203	304	406	507	607
4.0% V/V(fpm)	304	405	608	810	1013	1215
5.0% V/V(fpm)	380	506	760	1013	1266	1519

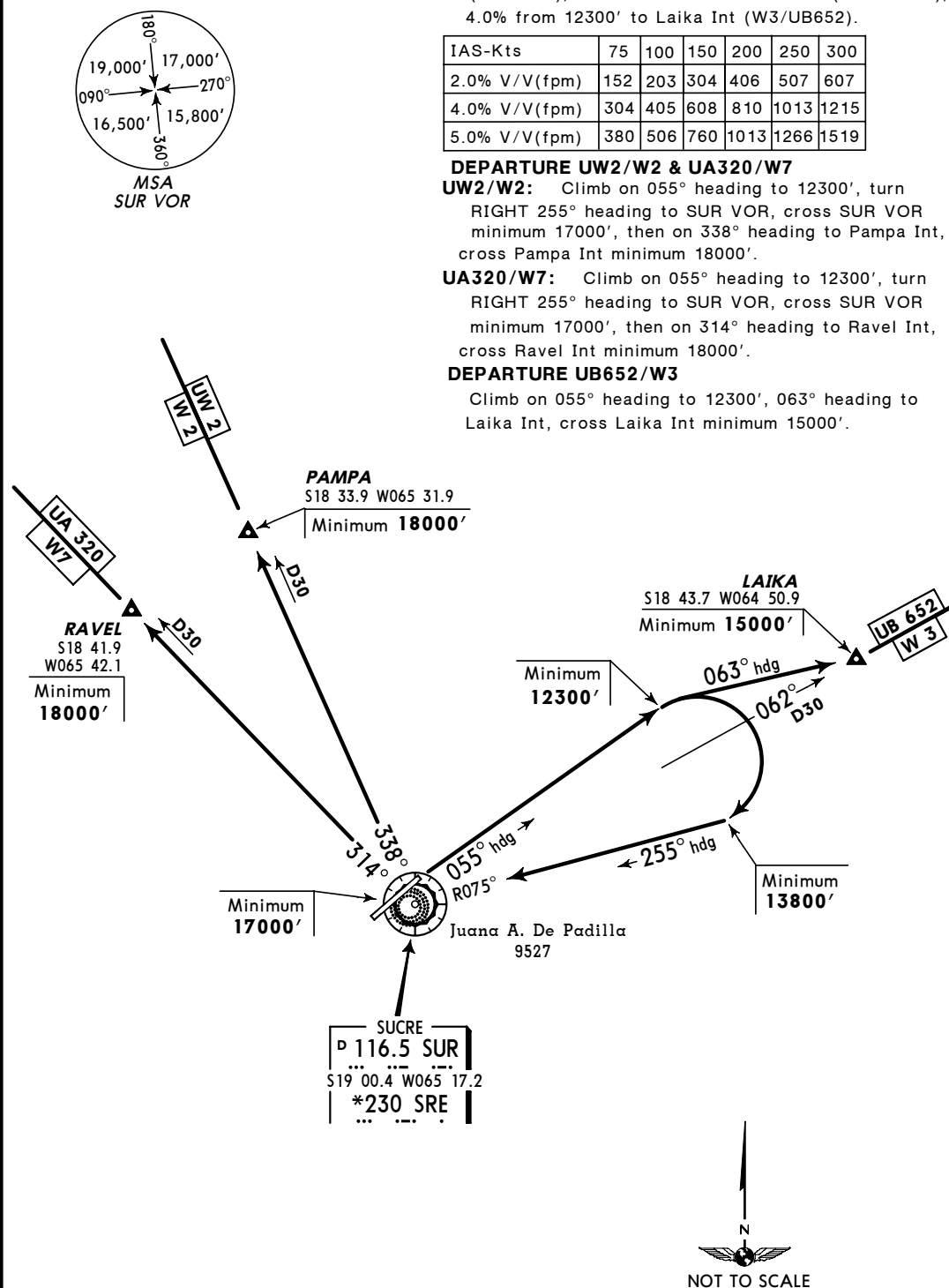
DEPARTURE UW2/W2 & UA320/W7

UW2/W2: Climb on 055° heading to 12300', turn
RIGHT 255° heading to SUR VOR, cross SUR VOR
minimum 17000', then on 338° heading to Pampa Int,
cross Pampa Int minimum 18000'.

UA320/W7: Climb on 055° heading to 12300', turn
RIGHT 255° heading to SUR VOR, cross SUR VOR
minimum 17000', then on 314° heading to Ravel Int,
cross Ravel Int minimum 18000'.

DEPARTURE UB652/W3

Climb on 055° heading to 12300', 063° heading to
Laika Int, cross Laika Int minimum 15000'.

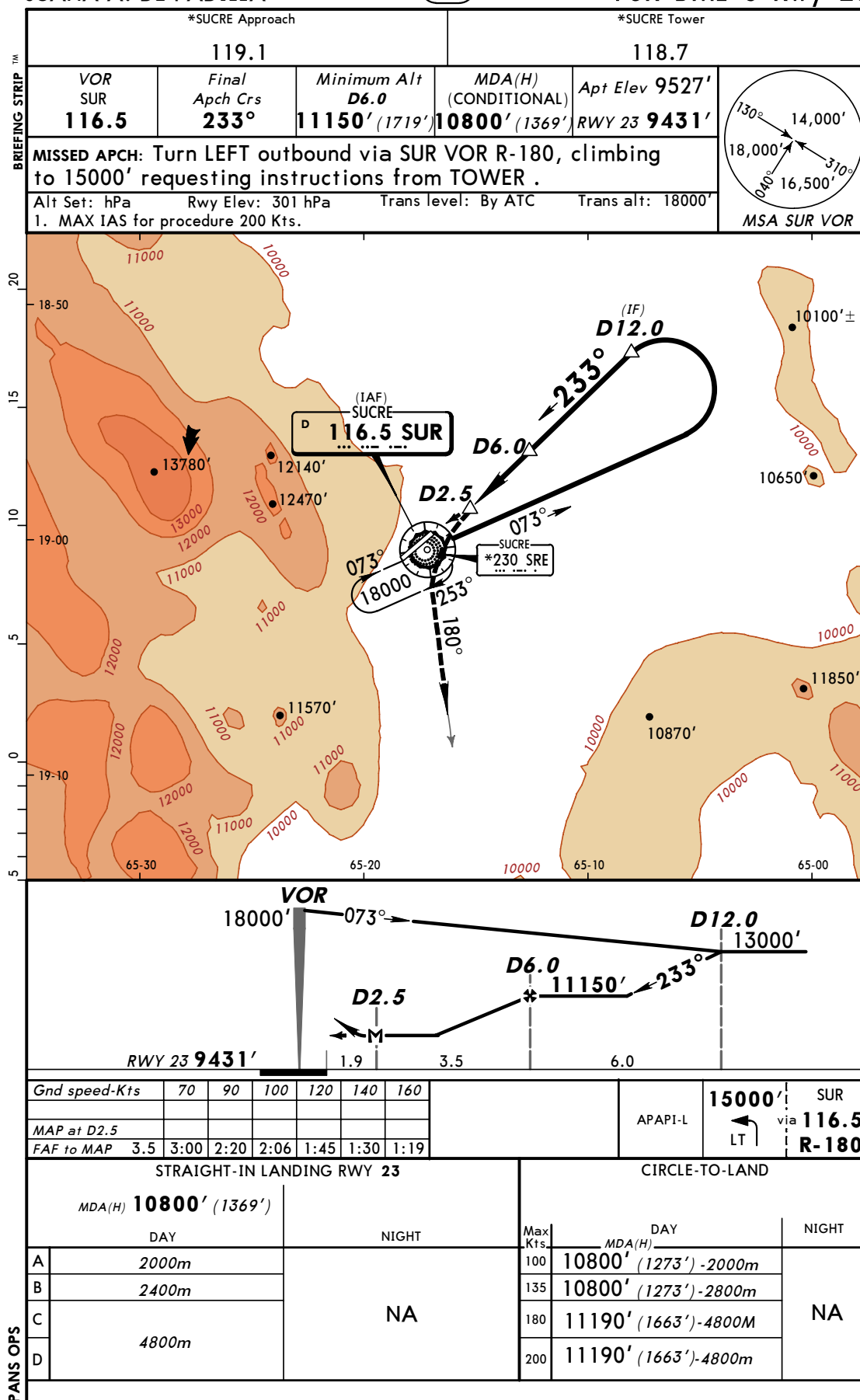


PARA USO EN AVIACIÓN VIRTUAL ÚNICAMENTE

SLSU/SRE
JUANA A. DE PADILLA

JEPPESEN
22 APR 05 (13-1)

SUCRE, BOLIVIA
VOR DME 3 Rwy 23



CHANGES: Circling minimums.

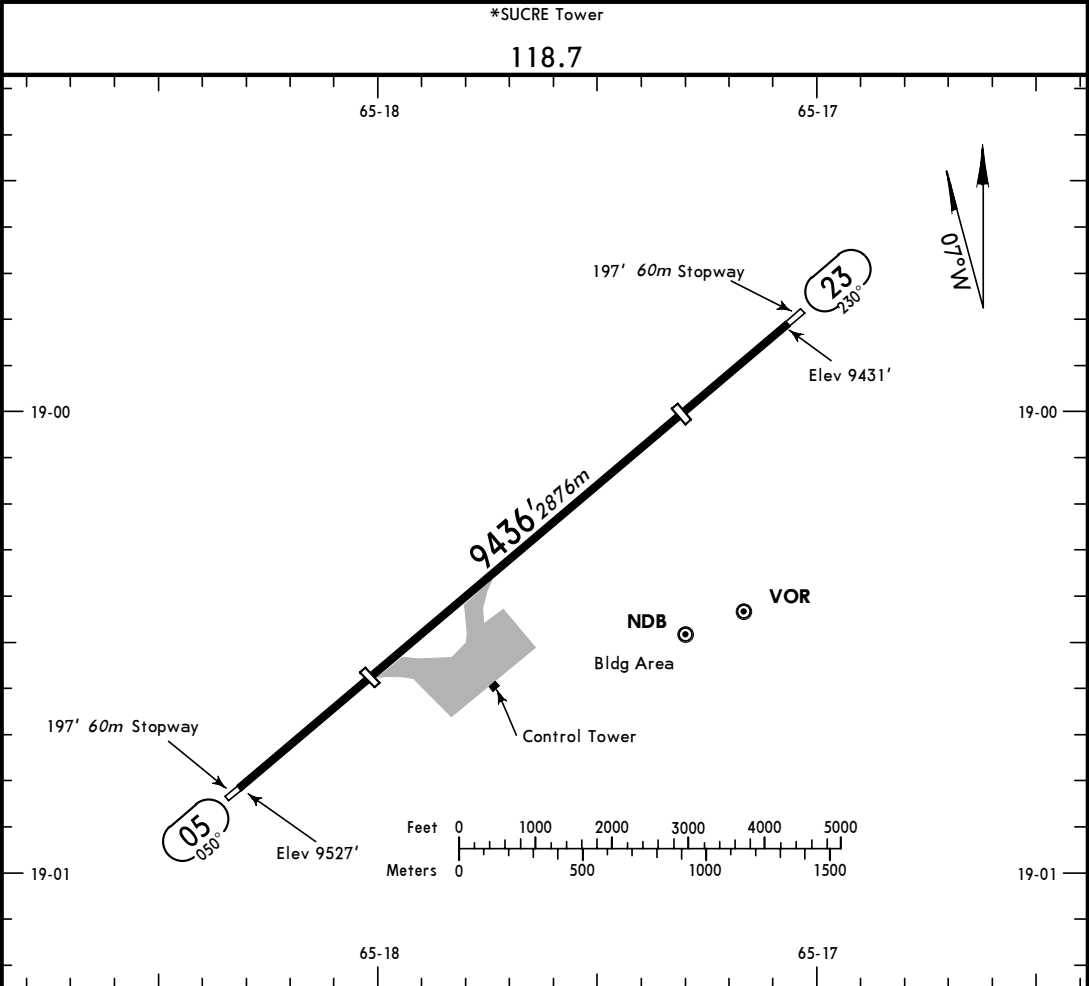
© JEPPESEN SANDERSON, INC., 1999, 2005. ALL RIGHTS RESERVED.

PARA USO EN AVIACIÓN VIRTUAL ÚNICAMENTE

SLSU/SRE
Apt Elev 9527'
S19 00.6 W065 17.6

JEPPESEN
22 APR 05 13-1

SUCRE, BOLIVIA
JUANA A. DE PADILLA



ADDITIONAL RUNWAY INFORMATION					
RWY		USABLE LENGTHS			
		LANDING BEYOND		TAKE-OFF	WIDTH
		Threshold	Glide Slope		
05		7172' 2186m			98'
23	APAPI-L (angle 2.47°)	7608' 2319m			30m

TAKE-OFF					FOR FILING AS ALTERNATE	
	AIR CARRIER Rwy 05		GENERAL AVIATION Rwy 05			
	DAY	NIGHT	DAY	NIGHT	DAY	NIGHT
2 Eng	1600m	NA	450m-2400m	NA	1000m -5000m	NA
3 & 4 Eng	800m					